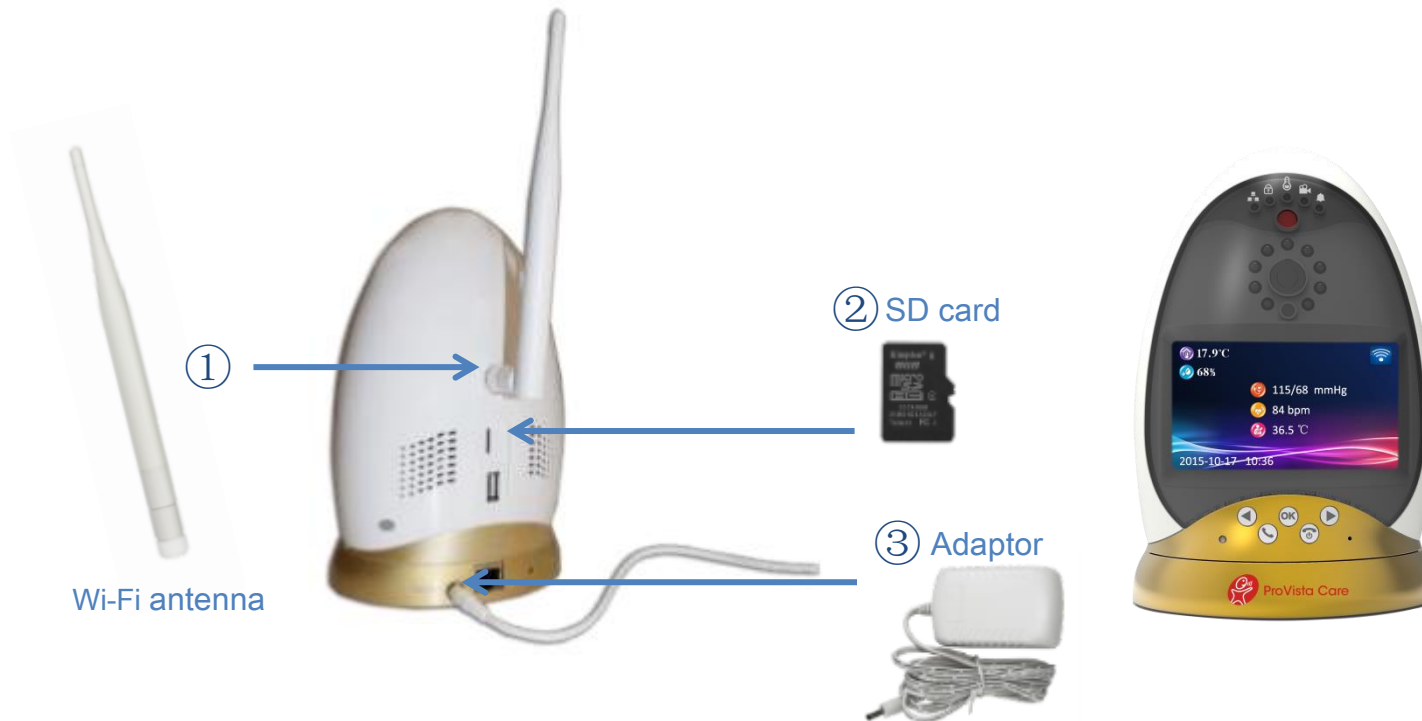




**Smart Housekeeper Smart Eye (BLA110)
Quick Start Guide
2016/11/25 updated**

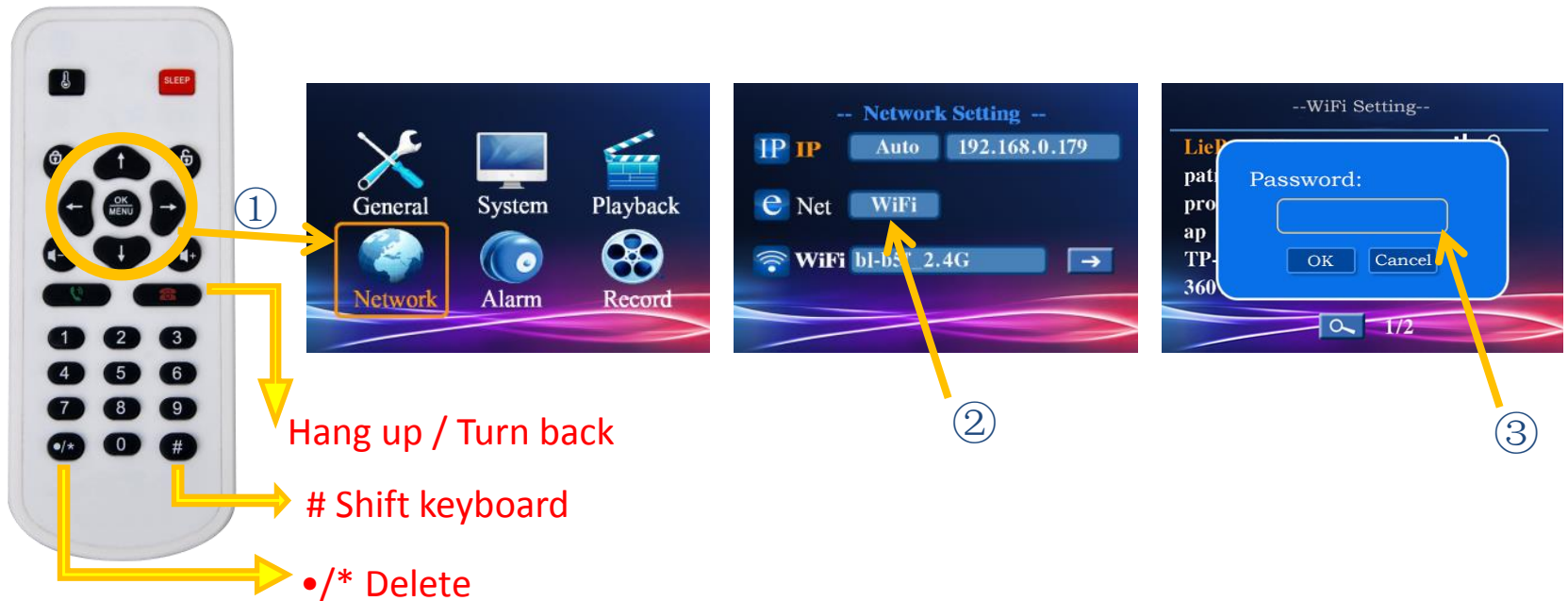
Smart Eye Installation

- ① Screw the Wi-Fi antenna;
- ② Insert the SD card into the TF card slot;
- ③ Plug in the adaptor and connect to AC power.



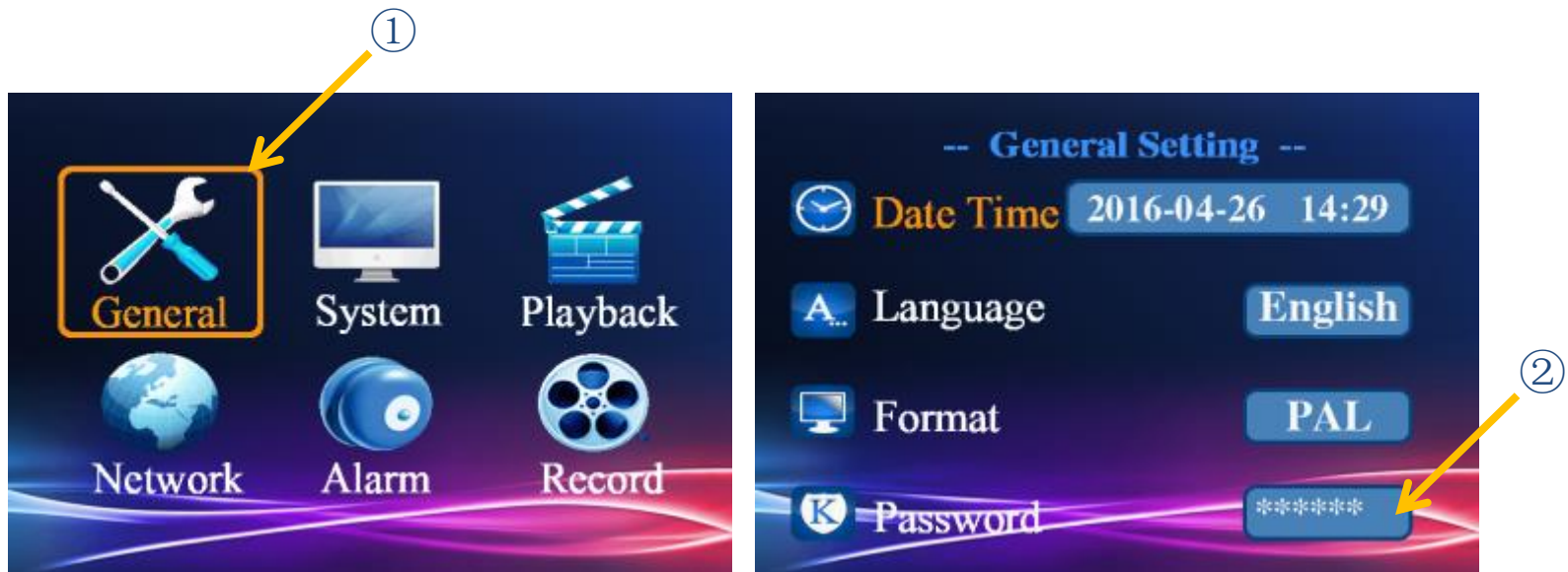
Network Settings

- ① Press “OK/Menu” to select “Network” interface of the Smart Eye;
- ② Press “arrows buttons” to select Wifi;
- ③ Select the indicated Wifi and input password.



Set Up Password of the Smart Eye

- ① Press the remote to select “General”;
- ② Set up password (please jot down the password or reset will be needed if forgot it) ;



Download APP

- ① Download from App Store or Google Play by Searching “ProVista Care”
- ② Or scan QR code with smart phone or tablet



Android



Apple IOS

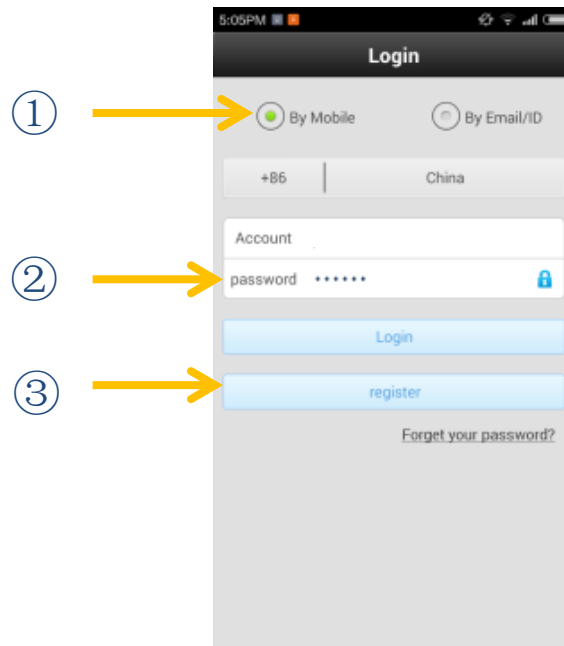
- ③ Or Click the following links:

Android: <http://www.provista-care.com/filedownload/ProVistaCare.apk>

IOS: <https://itunes.apple.com/cn/app/provista-care/id1053453690?l=en&mt=8>

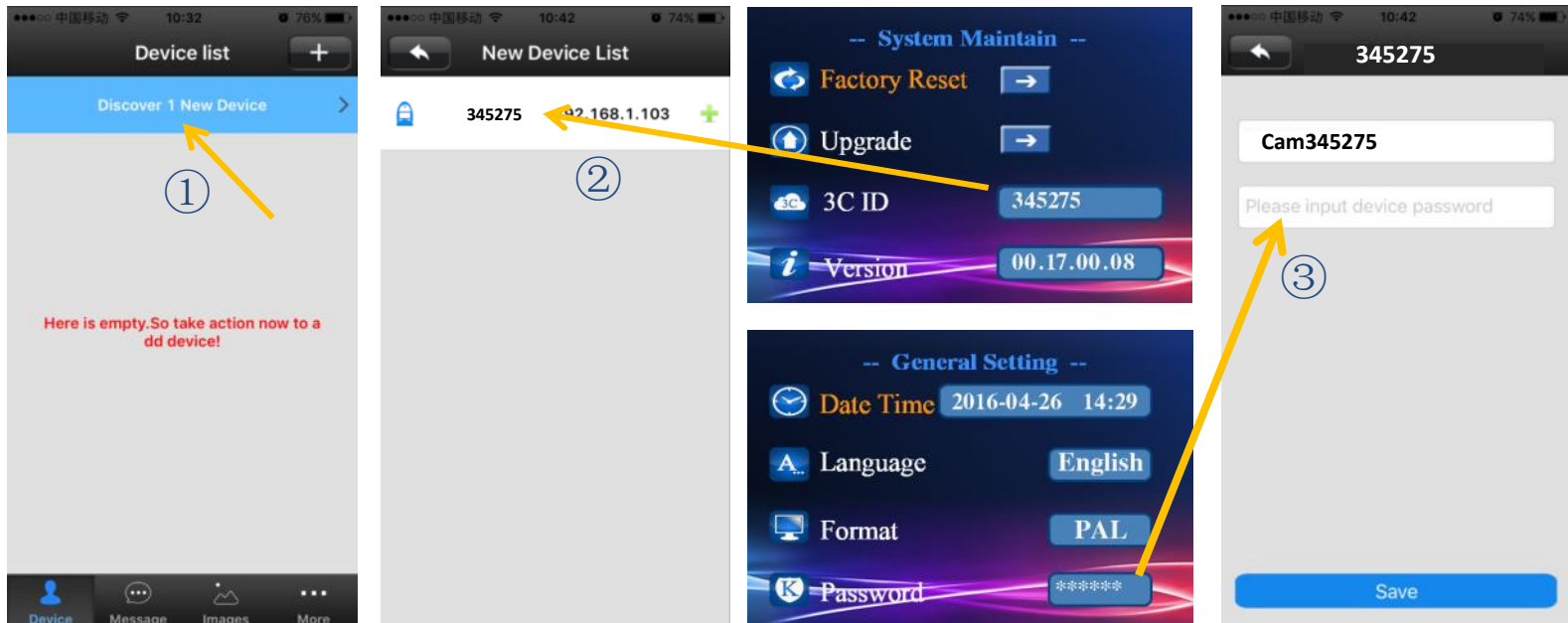
APP Register

- ① Register either by a phone number or Email address;
- ② Set up password;
- ③ Click “Register to confirmed”.



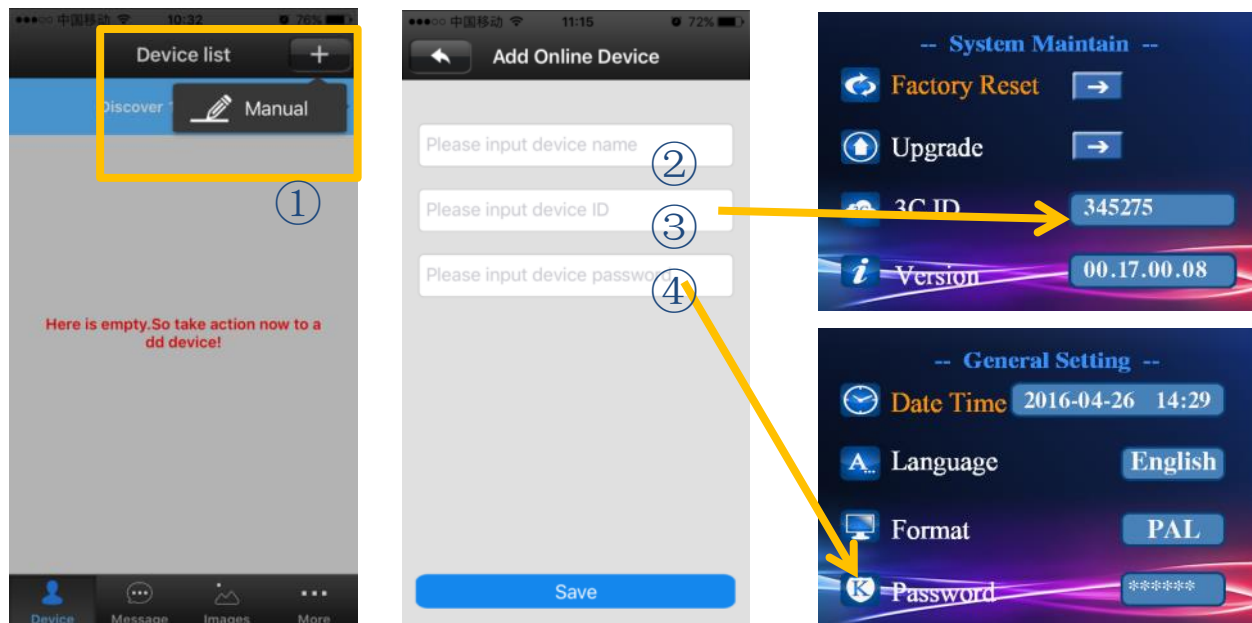
Add Smart Eye to APP I

- ① Click “Discover New Device” to enter the “New Device List”;
- ② Click to select the intended device (Device ID refers to the Smart Eye’s “System” interface);
- ③ Input the password of the device ID (refers to the “General Setting “ interface of the Smart Eye) ;



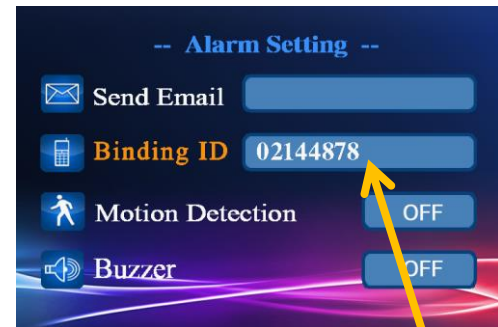
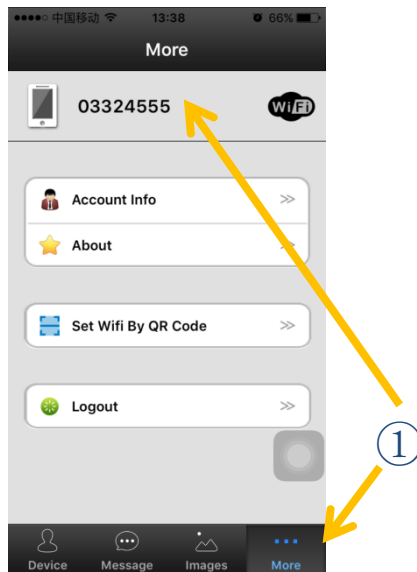
Add Smart Eye to APP II

- ① Click the **+** to select Manual mode;
- ② Input Device Name;
- ③ Input the Device ID (Device ID refers to the Smart Eye's "System" interface);
- ④ Input the password of the device (refers to the "General Setting" interface of the Smart Eye)



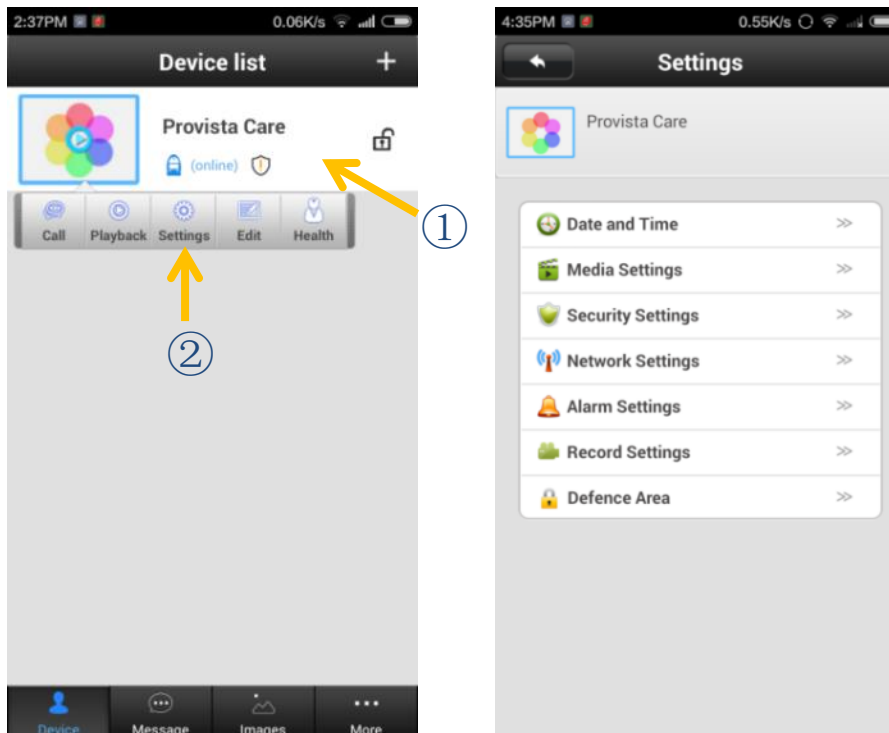
Blinding APP to Smart Eye

- ① Click “More” on the APP and find the APP account ID;
- ② Press the remote to enter the Smart Eye’s menu: “Alarm” – “Blinding ID”;
- ③ Input the APP account ID (up to 3 ID).





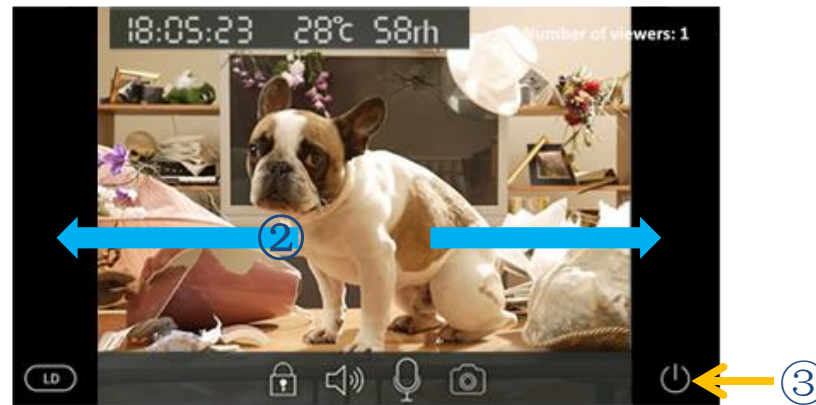
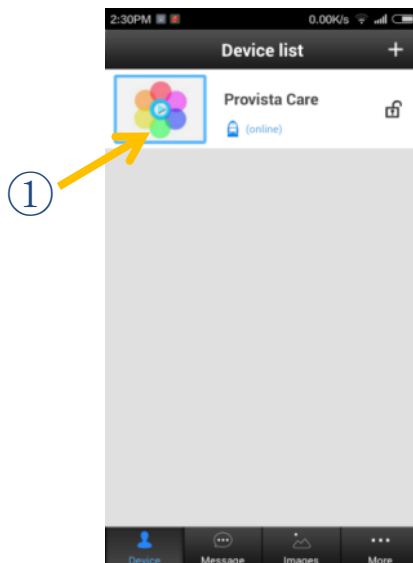
Remote Settings

- ① Click the blank of the device bar to show the menu;
- ② Click the “Settings”;
- ③ Click the intended subject to enter the settings interfaces.





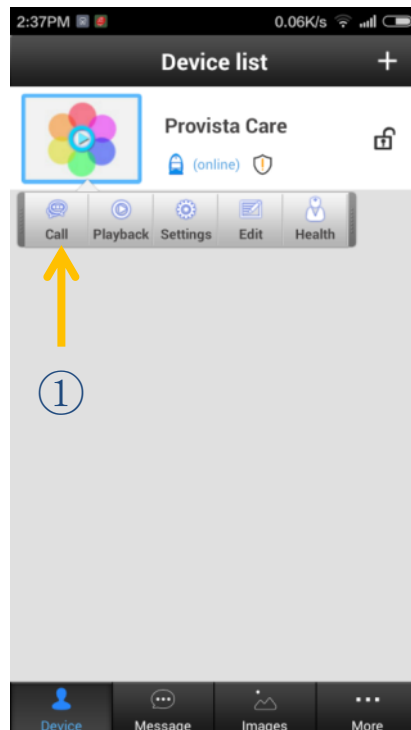
Surveillance Camera

- ① Click the  play icon of the intended device bar to use surveillance camera;
- ② Slide on the phone screen left and right to control the rotation of the camera;
- ③ Click the  icon to stop



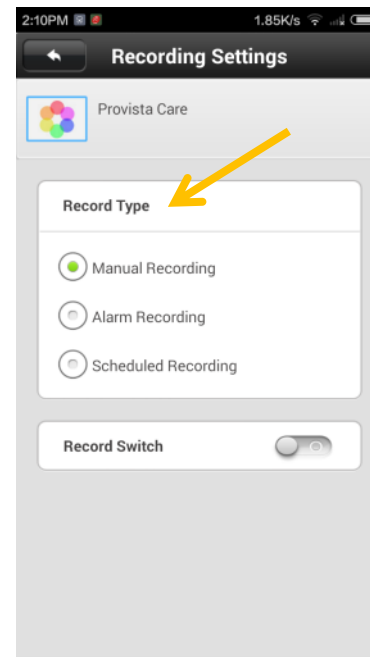
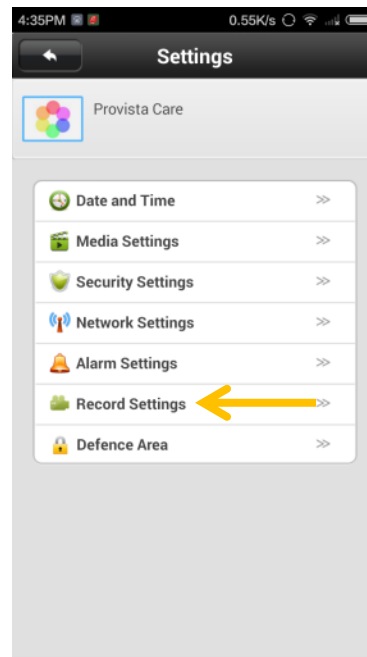
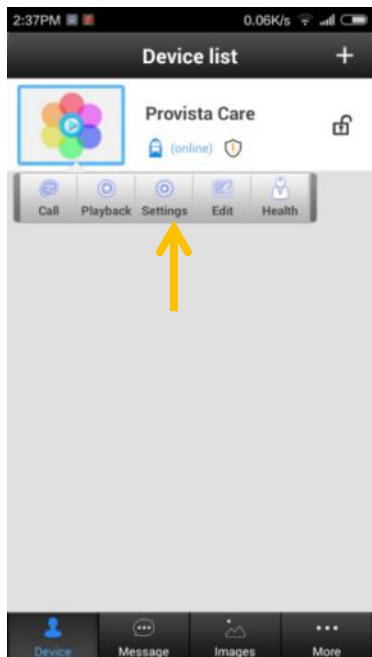
Video Call

- ① Click “Call” to make video call with the Smart Eye;
- ② Press the  button on the Smart Eye or IR remote to pick up and  button to hand up;



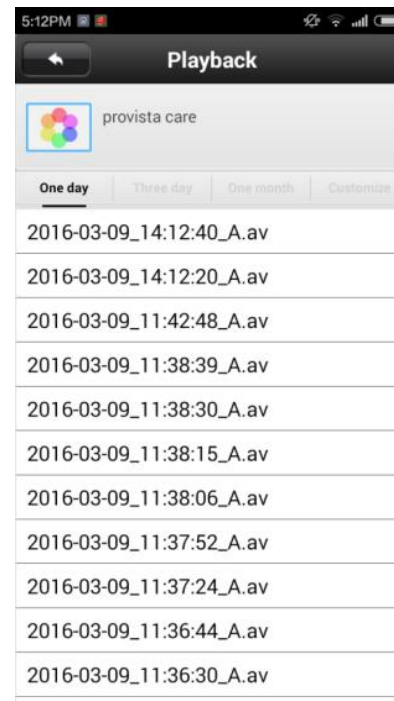
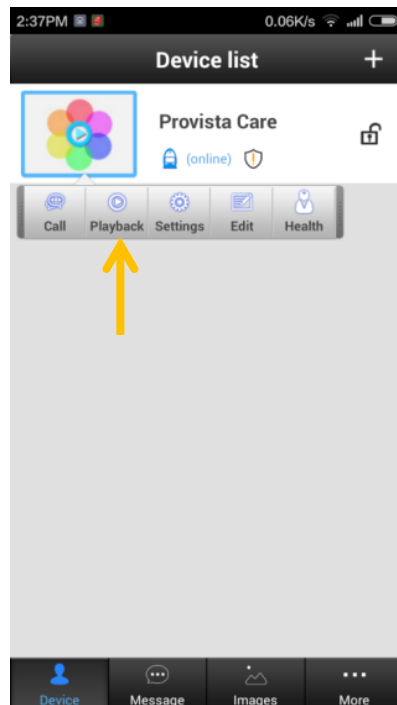
Video Recording

- ① Click “Settings”;
- ② Click “Record Settings”;
- ③ Select recording type.



Video Playback

- ① Click “Playback”;
- ② Select the intended videos by date;
- ③ Click the intended video to start playback



For more information, please download the user manual.